



Third-Party Distributors: Customer Resources

Third-Party Distributors: Customer Resources

Revision: Doc-TPDCR-70-112717-01

November, 2017

Diver Platform and Diver Solution Copyright © Dimensional Insight, Inc.

60 Burlington Mall Road

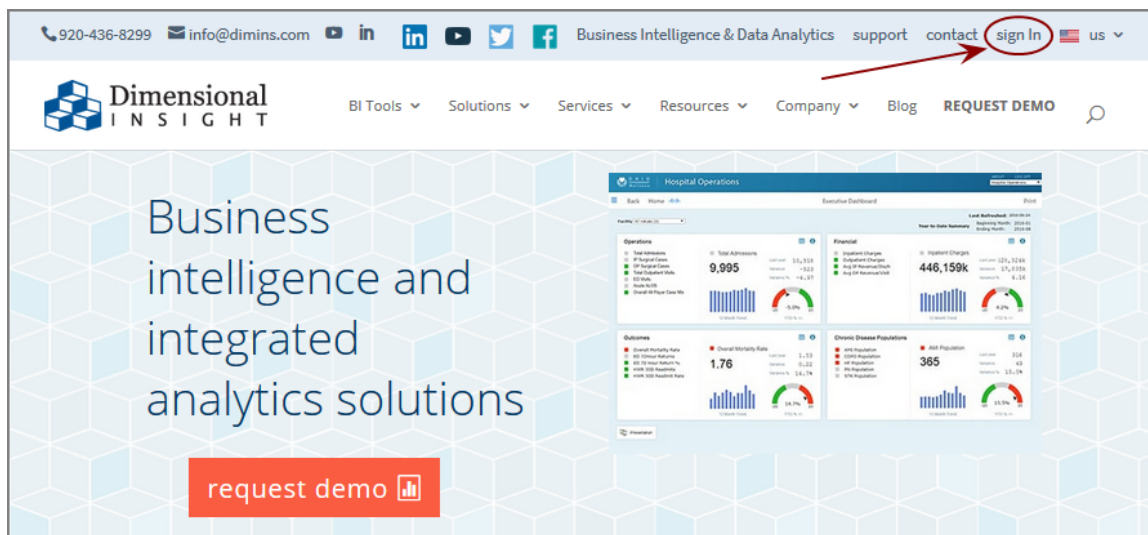
Burlington, Massachusetts 01803

Contents

Contents	3
Obtaining the Licensing Package	4
Creating a License Request File	8
Installing a License File	11
Viewing License Details	14
Deleting a License	16
Using the exportinfo Utility to Obtain Machine Information	18
Using the register Utility to Install a License File	20
Using the register Utility to Manage Licenses	22

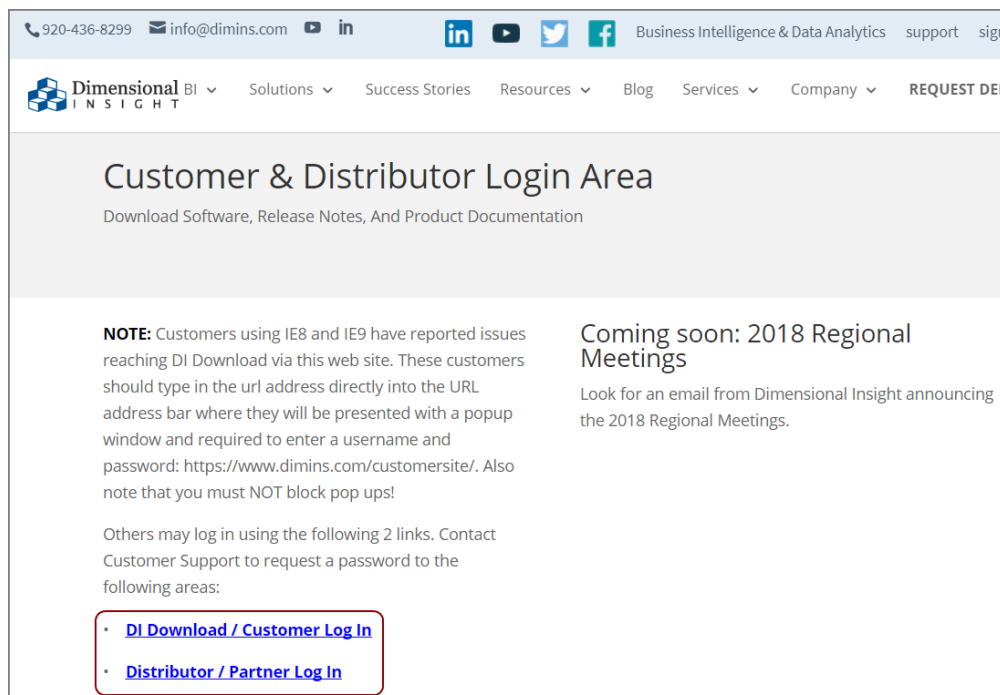
Obtaining the Licensing Package

1. From a web browser, navigate to the Dimensional Insight website (www.dimins.com).
2. On the home page, click **Sign In**.

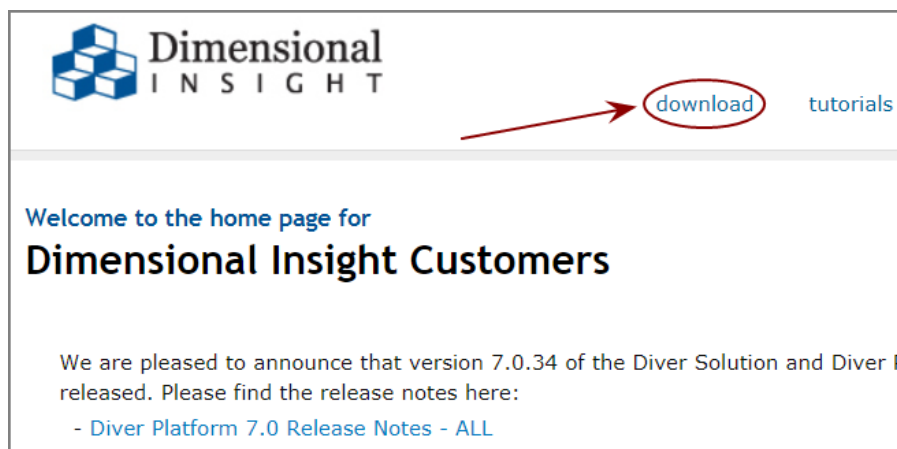


The **Customer & Distributor Login Area** page opens.

3. Do one of the following:
 - If you are a Dimensional Insight customer, click **DI Download / Customer Log In**.
 - If you are a third-party distributor, click **Distributor / Partner Log In**.



4. Enter and submit your login credentials.
5. At the top of the page, click **Download**.



DI Download opens.

6. Locate the **Licensing 7.0** package, and click the version number in the **Current Point Release** column.

Available for Download	Current Point Release
- Info 6.4	6.4.1 (1166KB)
- Licensing 7.0	7.0.29 (23102KB)
- Licensing 6.4	6.4.25 (2817KB)
- Trial Licenses 6.1	6.1.1310 (25KB)
Builder 7.0 windows	Update not available
Builder 7.0 linux64	7.0.24 (54313KB)

The package begins to download.

NOTE: The Licensing 7.0 package includes one file, called *licensing-<version number>-pkg.zip* (for example, *licensing-7.0.29-pkg.zip*).

- If you are downloading the Licensing 7.0 package for use on another machine, move the *licensing-<version number>-pkg.zip* file. You might use FTP or a comparable method.

Otherwise, proceed to the next step.

- Use WinZip or another third-party tool to extract the package. Dimensional Insight recommends that you extract the Licensing 7.0 package to the `DI\Solution\downloads` directory that your organization created during product installation.

A directory is created, called *licensing-<version number>* (for example, *licensing-7.0.29*). The directory contains the following files:

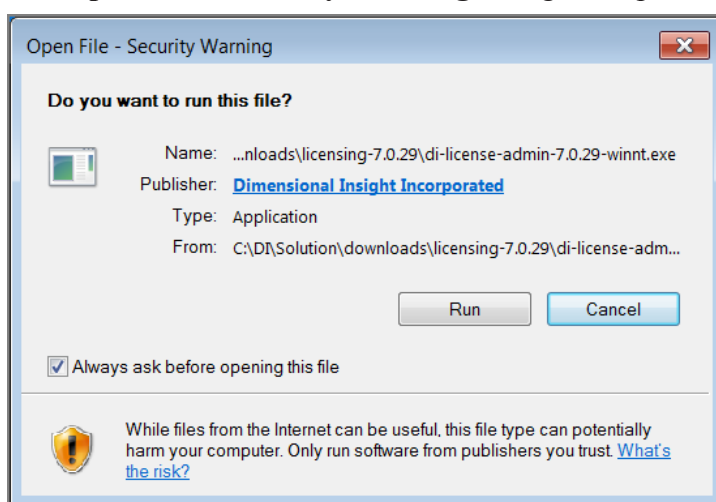
- di-license-admin-<version number>-winnt.exe**—A GUI utility for Windows used to request, install, and manage licenses.
- exportinfo-<version number>-winx64.exe**—A command-line utility for Windows used to obtain your machine's information, which is necessary to request a license. Use this utility if the DI-License-Admin utility cannot be used.
- register-<version number>-winx64.exe**—A command-line utility for Windows used to install and manage licenses. Use this utility if the DI-License-Admin utility cannot be used.
- exportinfo-<version number>-linux64**—A command-line utility for Linux used to obtain your machine's information, which is necessary to request a license.
- register-<version number>-linux64**—A command-line utility for Linux used to install and manage licenses.
- direg-iserries.zip**—Contains licensing utilities for use with iSeries or AS/400 machines.

- **Licensing-Guide-for-Diver-70.pdf**—This document.
- **Third-Party-Distributors-Customer-Resources.pdf**—A document directed toward third-party distributors and their customers.

Creating a License Request File

1. In the Licensing 7.0 package that you obtained from DI Download, double-click **di-license-admin-<version number>-winnt.exe** (for example, *di-license-admin-7.0.29-winnt.exe*).

The **Open File – Security Warning** dialog box opens.



2. Click **Run**.

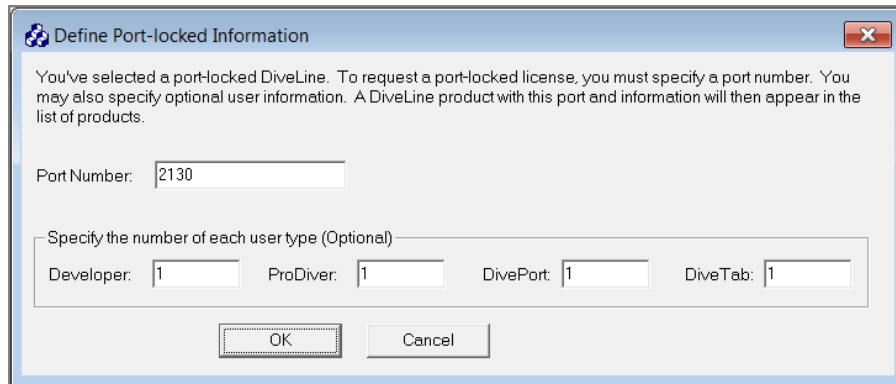
The DI-License-Admin utility starts.

3. Click the **Request Licenses** tab.

On the left, the **Machine Name**, **Operating System**, and **Machine ID** boxes are populated with your machine's information.

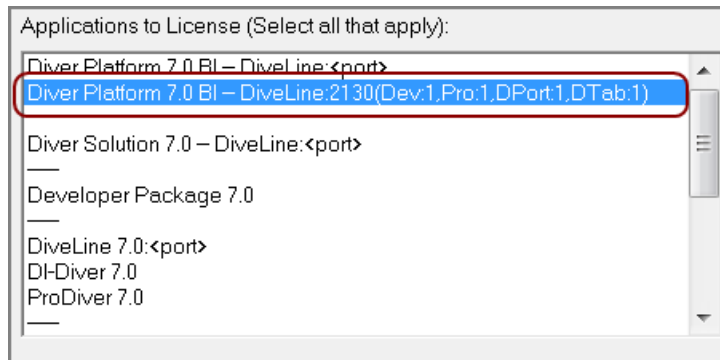
On the right, the **Applications to License** box is populated with the licenses for the software you purchased.

4. Specify details about the server-side licenses that you want to request:
 - a. In the **Applications to License** box, select the license that enables the server-side software you purchased. For example, if you purchased Diver Platform Server 7.0 for Windows, select **Diver Platform 7.0 BI – DiveLine <port>**.
The **Define Port-locked Information** dialog box opens.
 - b. Enter the Port Number that you want to use.
You must specify a unique port number for every virtual environment in your deployment.
TIP: The default port number is 2130, however you can use any number that you want.
 - c. If you know the number of users of each type that you purchased access for, complete the remaining fields.
Otherwise, your distributor can find this information for you.



- d. Click **OK**.

The options you specified appear as a new entry in the **Applications to License** box.



- e. Repeat steps a through d to request a server-side license for each virtual environment on your machine.
5. In the **Applications to License** box, select the remaining licenses for the products that you purchased.

For example, if you purchased the Diver Platform Developer Pack 7.0 for Windows, select **Developer Package 7.0**.

6. In the **Comments/Questions** box, specify any additional purchases, such as Input Tables or Measure Factory, and include any comments or questions that you have. Dimensional Insight recommends that you also provide your machine's media access control (MAC) address.

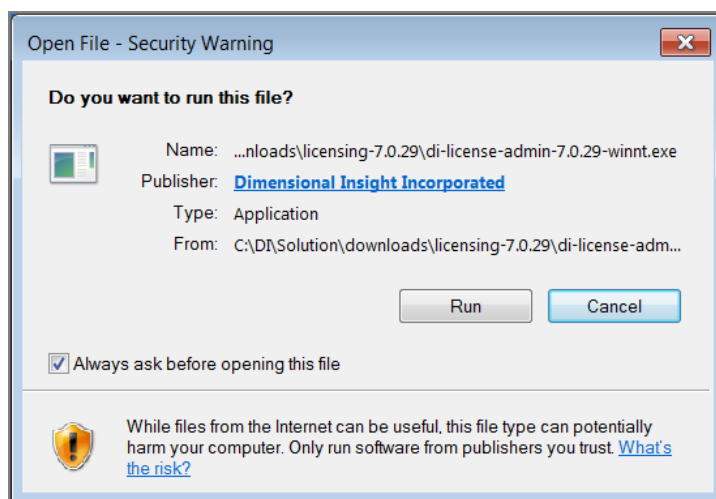
NOTE: If installed on a virtual machine and that machine is relocated, a new license is required. This can be avoided by ensuring the virtual machine is installed with a fixed MAC address. See <http://kb.vmware.com> for more information.

7. Click **Save** to save your changes as a license request (*request*) file.
The *request* file is saved in the current directory.
8. Click **File > Exit** to close the DI-License-Admin utility.

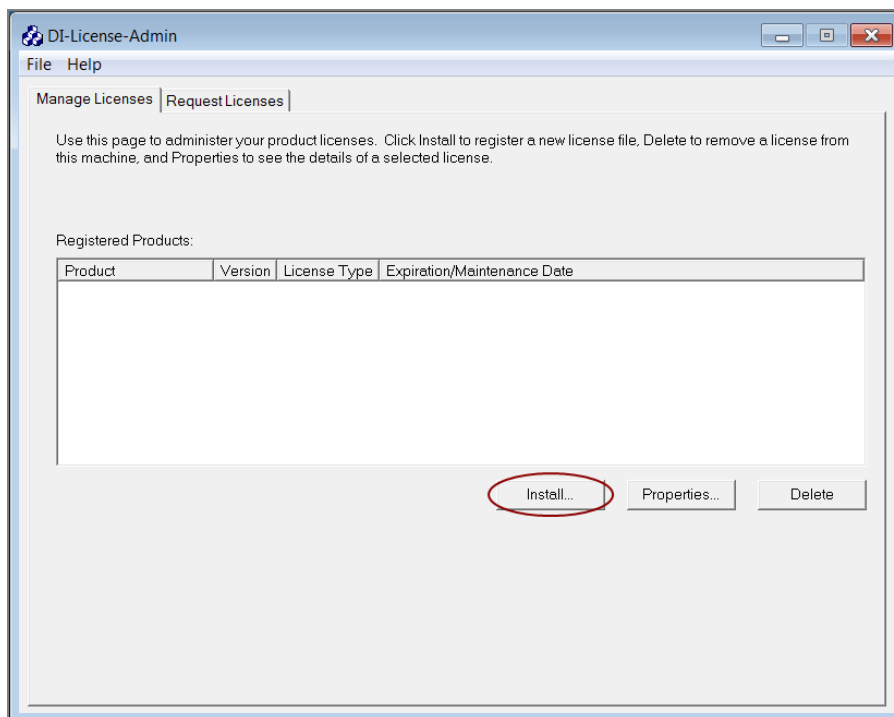
Installing a License File

1. In the Licensing 7.0 package that you obtained from DI Download, double-click **di-license-admin-<version number>-winnt.exe** (for example, *di-license-admin-7.0.29-winnt.exe*).

The **Open File – Security Warning** dialog box opens.

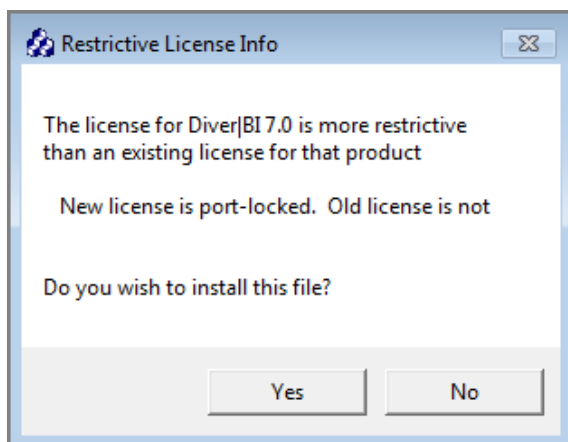


2. Click **Run**.
The DI-License-Admin utility starts.
3. On the **Manage Licenses** tab, click **Install**.

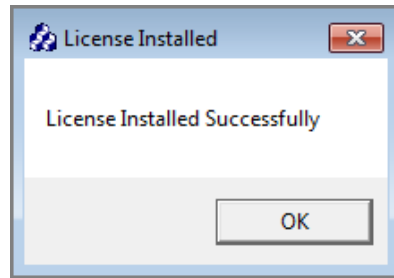


4. Select the license file that you want to install, and click **Open**.

NOTE: If you are replacing an existing license with a more restrictive license, a **Restrictive License Info** dialog opens, asking if you still wish to install the file. Note the conditions of the new license, and click **Yes**.



The license program displays a confirmation message.

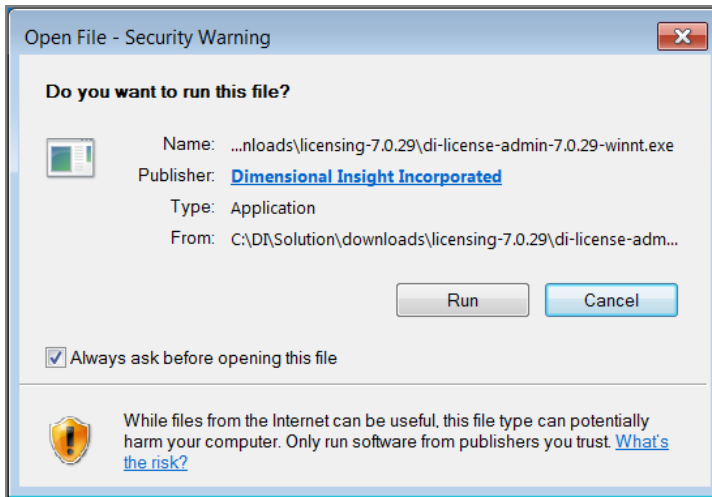


5. Click **OK**.
6. Repeat this process for each license file that you want to install.

Viewing License Details

1. In the Licensing 7.0 package that you obtained from DI Download, double-click **di-license-admin-<version number>-winnt.exe** (for example, *di-license-admin-7.0.29-winnt.exe*).

The **Open File – Security Warning** dialog box opens.

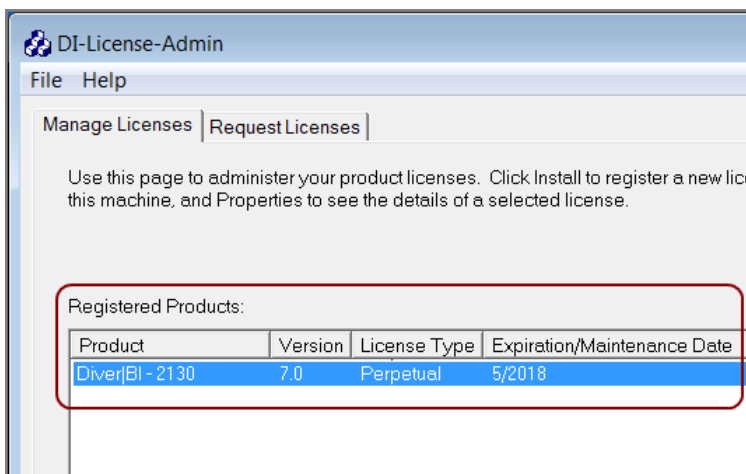


2. Click **Run**.

The DI-License-Admin utility starts.

3. On the **Manage Licenses** tab, note the entries in the **Registered Products** box.

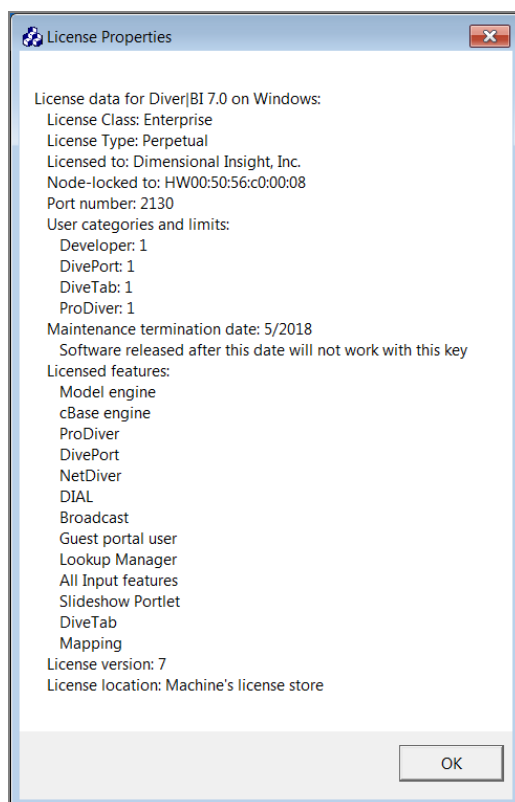
The **Registered Products** box displays the licenses that are currently installed on your machine, as well as the version number, type, and expiration or maintenance date.



NOTE: A license's expiration or maintenance date is always on the first of the month. For example, a license with a maintenance date of 5/2018 becomes outdated on May 1st, 2018.

4. To see additional details about a particular license, select it in the **Registered Products** box, and then click **Properties**.

The **License Properties** dialog box opens, displaying information about the selected license.



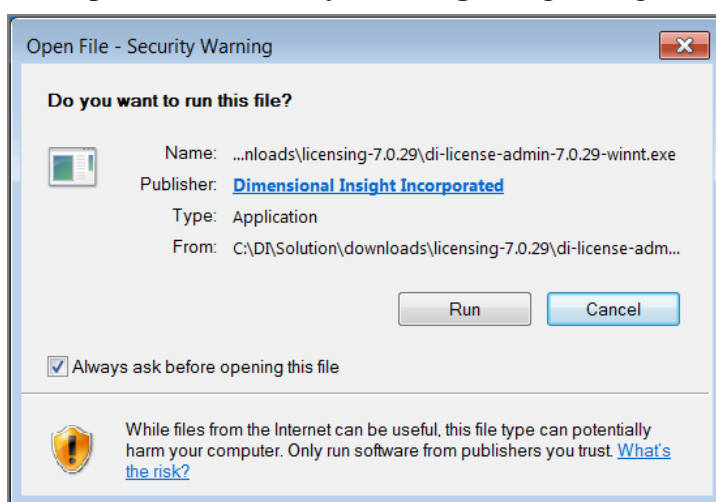
Deleting a License

Delete a license only if you no longer need the software it enables.

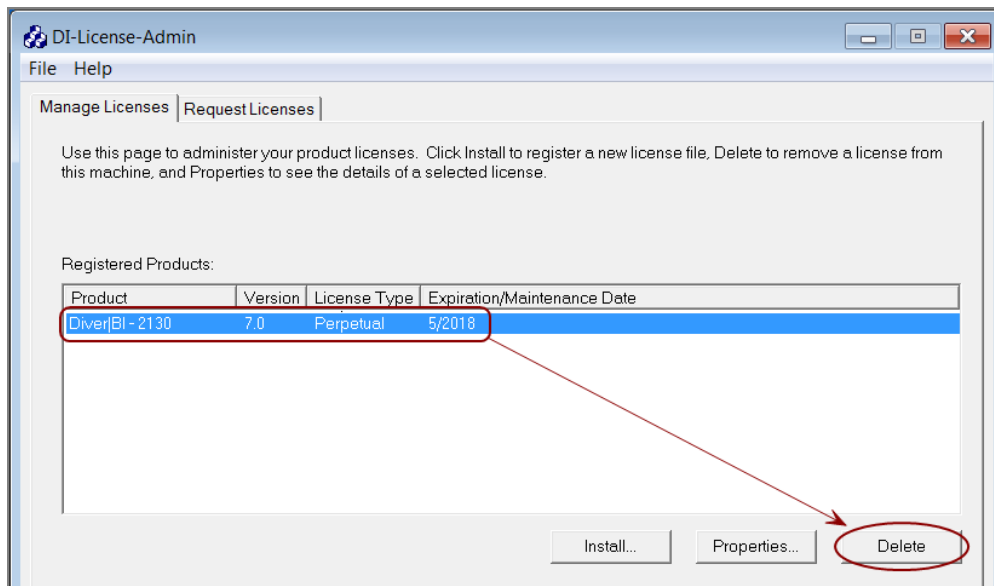
If you are renewing a license, you do not need to delete the old license before you install the new one, using the DI-License-Admin utility. The new license overwrites the old license when you install it.

1. In the Licensing 7.0 package that you obtained from DI Download, double-click **di-license-admin-<version number>-winnt.exe** (for example, *di-license-admin-7.0.29-winnt.exe*).

The **Open File – Security Warning** dialog box opens.

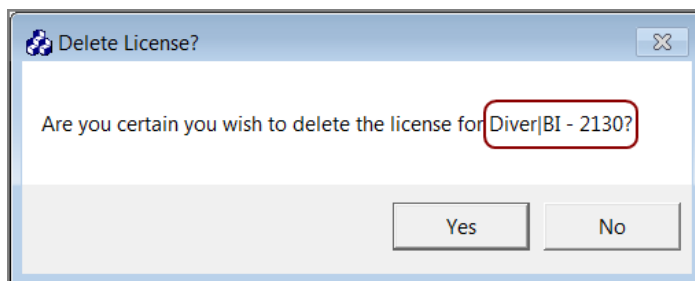


2. Click **Run**.
The DI-License-Admin utility starts.
3. On the **Manage Licenses** tab, in the **Registered Products** box, select the license that you want to delete.
4. Click **Delete**.



The **Delete License?** confirmation box opens.

5. In the confirmation box, note the name of the license to be deleted, and click **Yes**.



The license is deleted.

Using the exportinfo Utility to Obtain Machine Information

You use the `exportinfo` utility to export your machine's name, operating system, and machine ID to a machine information (*info*) file.

NOTE: This guide provides commands for machines using Ubuntu 16.0.4 (with the `sudo` package enabled) and VMware 10.0.3.

1. Navigate to the `licensing-<version number>` directory (for example, `licensing-7.0.29`) that was created when you unzipped the Licensing 7.0 package from DI Download.

If you unzipped the package to the `di/solution/downloads` directory, from your machine's root directory, enter the following command:

```
cd di/solution/downloads/licensing-<version number>
```

2. Confirm that the `exportinfo` utility is in the directory you navigated to:

```
ls
```

The contents of the directory display, including the `exportinfo-<version number>-linux64` file (for example, `exportinfo-7.0.29-linux64`).

3. Check the permissions on the `exportinfo` utility to verify that you can run it:

```
ls -l exportinfo-<version number>-linux64
```

The permissions display. If an `x` displays within the first group of letters—for example, if you see `-rwxr--r--`—that means you can run the utility.

If you do not have permission to run the utility:

- a. Add the execute permission:

```
sudo chmod a+x exportinfo-<version number>-linux64
```

- b. Verify the permission change:

```
ls -l exportinfo-<version number>-linux64
```

The permissions display as `-rwxr-xr-x`, which means that you can run the utility.

4. Run the `exportinfo` utility:

```
sudo ./exportinfo-<version number>-linux64
```

The `exportinfo` utility prompts you to specify a name for the machine information (*info*) file.

5. Specify a file name by doing one of the following:
 - Accept the default file name—`di_minfo_<your machine's name>.info` (for example, `di_minfo_jsmith-001.info`)—by pressing the **Enter** key.
 - Enter a name for the file, including the `.info` extension. For example, you might enter `burlington_server.info`.

You can use any file name that is meaningful to you, but it is a good idea to identify your machine in the file name, so that you can recognize it later.

6. Confirm that the file was created successfully:

```
ls
```

The contents of the current directory display, including the (*info*) file that you just created.

7. (Recommended) Move the machine information file to the `di/solution/licenses` directory that was created during product installation.

If you are currently in the `di/solution/downloads/licensing-<version number>` directory, enter the following command:

```
sudo mv <file name>.info ../../licenses
```

Using the register Utility to Install a License File

IMPORTANT: If you are upgrading your license, you must first delete your old license. For more information, see [Using the register Utility to Manage Licenses on page 22](#).

NOTE: This guide provides commands for machines using Ubuntu 16.0.4 (with the sudo package enabled) and VMware 10.0.3.

1. Navigate to the `licensing-<version number>` directory (for example, `licensing-7.0.29`) that was created when you unzipped the Licensing 7.0 package from DI Download.

If you unzipped the package to the `di/solution/downloads` directory, from your machine's root directory, enter the following command:

```
cd di/solution/downloads/licensing-<version number>
```

2. Confirm that the register utility is in the directory you navigated to:

```
ls
```

The contents of the directory display, including the `register-<version number>-linux64` file (for example, `register-7.0.29-linux64`).

3. Check the permissions on the register utility to verify that you can run it:

```
ls -l register-<version number>-linux64
```

The permissions display. If an `x` displays within the first group of letters—for example, if you see `-rwxr--r--`—that means you can run the utility.

If you do not have permission to run the utility:

- a. Add the execute permission:

```
sudo chmod a+x register-<version number>-linux64
```

- b. Verify the permission change:

```
ls -l register-<version number>-linux64
```

The permissions display as `-rwxr-xr-x`, which means that you can run the utility.

4. Move the register utility to the `di/solution/diveline/bin` directory that was created during product installation. You won't be able to run the register utility successfully unless it is in this directory.

If you are currently in the `di/solution/downloads/licensing-<version number>` directory, enter the following command:

```
sudo mv register-7.0.29-linux64 ../../diveline/bin
```

5. Navigate to the `di/solution/diveline/bin` directory.

For example:

```
cd ../../diveline/bin
```

6. Confirm that the register utility is in the directory you navigated to:

```
ls
```

The contents of the directory display, including the `register-<version number>-linux64` file (for example, `register-7.0.29-linux64`).

7. Run the register utility, and specify the license file to install:

```
sudo ./register-<version number>-linux64 <path to the license file>/<name of the license file>.license
```

For example:

```
sudo ./register-7.0.29-linux64 ../../licenses/c0001_ubuntu_platform70_p2131_m201809.license
```

8. Confirm that the installation was successful:

```
sudo ./register-<version number>-linux64 -l all
```

A list of the licenses that are currently installed on the machine display, including the license file that you just installed.

9. Repeat this process for each license file that you want to install.

Using the register Utility to Manage Licenses

NOTE: This guide provides commands for machines using Ubuntu 16.0.4 (with the `sudo` package enabled) and VMware 10.0.3.

1. Navigate to the `licensing-<version number>` directory (for example, `licensing-7.0.29`) that was created when you unzipped the Licensing 7.0 package from DI Download.

If you unzipped the package to the `di/solution/downloads` directory, from your machine's root directory, enter the following command:

```
cd di/solution/downloads/licensing-<version number>
```

2. Confirm that the register utility is in the directory you navigated to:

```
ls
```

The contents of the directory display, including the `register-<version number>-linux64` file (for example, `register-7.0.29-linux64`).

3. Check the permissions on the register utility to verify that you can run it:

```
ls -l register-<version number>-linux64
```

The permissions display. If an `x` displays within the first group of letters—for example, if you see `-rwxr--r--`—that means you can run the utility.

If you do not have permission to run the utility:

- a. Add the execute permission:

```
sudo chmod a+x register-<version number>-linux64
```

- b. Verify the permission change:

```
ls -l register-<version number>-linux64
```

The permissions display as `-rwxr-xr-x`, which means that you can run the utility.

4. Move the register utility to the `di/solution/diveline/bin` directory that was created during product installation. You won't be able to run the register utility successfully unless it is in this directory.

If you are currently in the `di/solution/downloads/licensing-<version number>` directory, enter the following command:

```
sudo mv register-7.0.29-linux64 ../../diveline/bin
```

5. Navigate to the `di/solution/diveline/bin` directory.

For example:

```
cd ../../diveline/bin
```

6. Confirm that the register utility is in the directory you navigated to:

```
ls
```

The contents of the directory display, including the *register-`<version number>`-linux64* file (for example, *register-7.0.29-linux64*).

7. Use the following commands to manage your licenses:

- `sudo ./register-<version number>-linux64 -l all`—View all the licenses that are currently installed on the machine.
- `sudo ./register-<version number>-linux64 -l <product name>`—View the licenses that are installed on the machine that enable a certain product.

For the product name, you can specify `diver-bi` (Diver Platform), `solution`, `diveline`, `spectre`, `integ`, `builder`, `mdlsplit`, or `reporter`.

For example:

```
sudo ./register-<version number>-linux64 -l
diver-bi
```

- `sudo ./register-<version number>-linux64 -d all`—Delete all the licenses that are currently installed on the machine.
- `sudo ./register-<version number>-linux64 -d <product name>`—Delete the licenses that are installed on the machine that enable a certain product.

For the product name, you can specify `diver-bi` (Diver Platform), `solution`, `diveline`, `spectre`, `integ`, `builder`, `mdlsplit`, or `reporter`.

For example:

```
sudo ./register-<version number>-linux64 -d
solution
```

